

Stock Code:MHU30015008-DP

MHU30015008-DP 3 x 1.5 x 203 Ultra

STAMPING DETAILS:

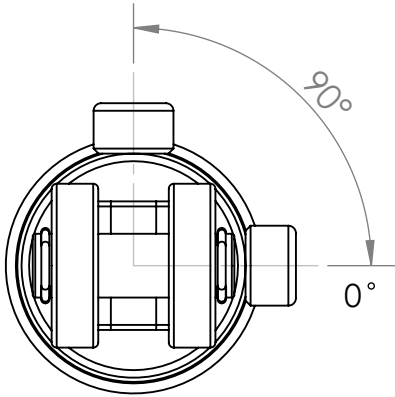
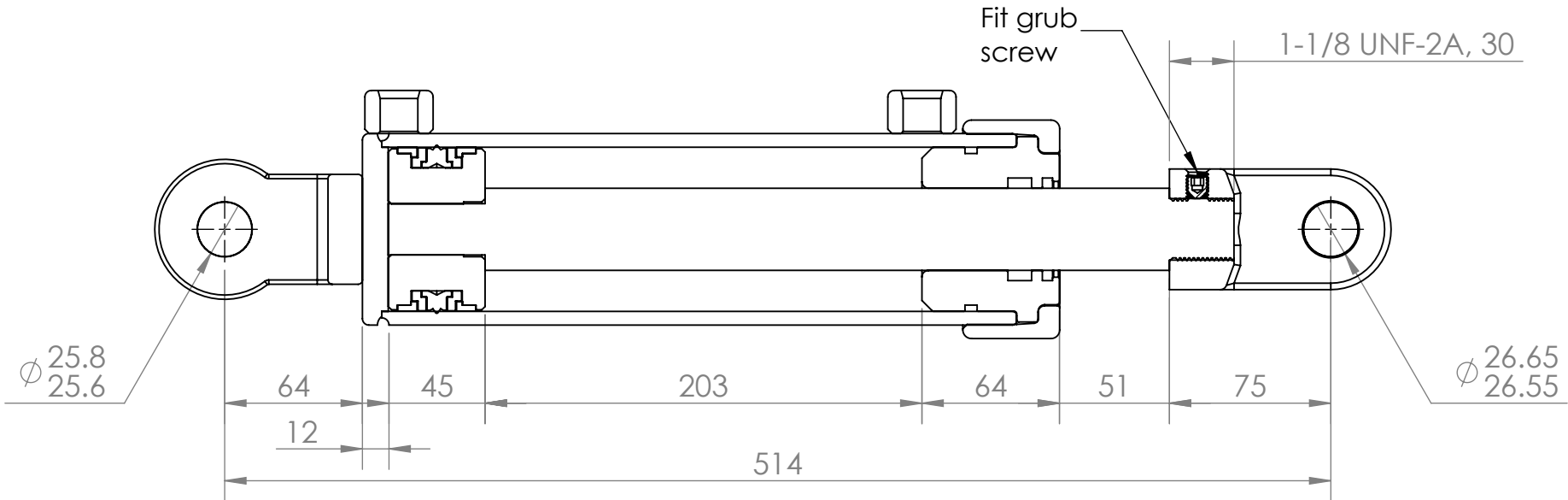
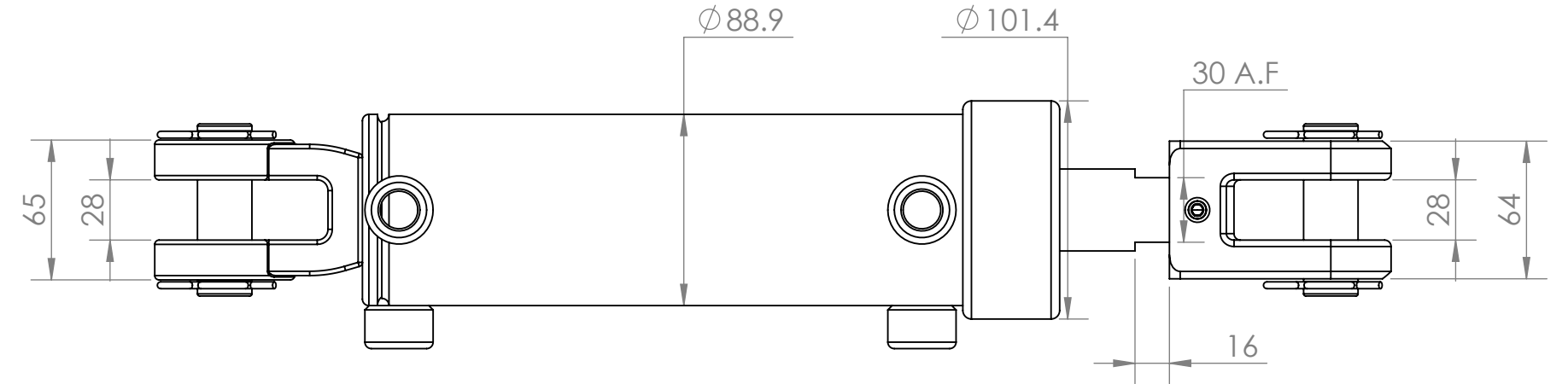
Stamping Type:		Pin
MOTUS	XXXXX	"X" Refers to MOTUS 5 digit build number
MHU30015008-DP		Customer stamping text (if applicable)

Company:	C&M	
Cylinder Name: (if applicable)	MHU30015008-DP	
Cylinder Type:	Ultra	DA
Operating Pressure:	4000 PSI	
Safety Rating:	2.5 : 1	
Weight:	15.12	kg

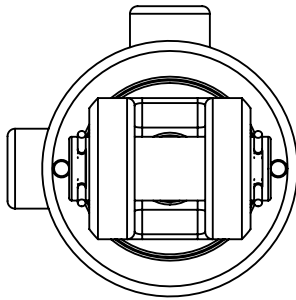
Motus Decal:	Yes	
Paint/Finish:	Black	
Seal Kit :	6106842	

Bore Dia / Finished Length	Ø 3"	295	mm
Wall Thickness :	1/4		
Shaft Dia / Finished Length	Ø 1.5"	393	mm
Material :	1045		
Piston Thread Details:	Ø 1"	45	mm

BASE	SPEAR
Mount: Clevis 1" Pin x 28 Gap CL10 Part No: 6006287	Mount: Threaded Clevis CL10-28-75 1-1/8" Thread Part No: 6007510
Pin Size Ø : 1"	Pin Size Ø : 1"
Bush Type: - L Bore: No	Bush Type: - L Bore: No
Bush Size: -	Bush Size: -
Base Bearing: -	Shaft Bearing : -
Grease Nipple: N/A	Grease Nipple: N/A
Port: 3/4 Female UNO -8 (x2)	Port: 3/4 Female UNO -8 (x2)
Orientation: 0 & 90	Orientation: 0 & 90
Drill Size: 10 mm	Drill Size: 10 mm
Drill Distance: 10 mm	Drill Distance: 44 mm



Base View



Front View

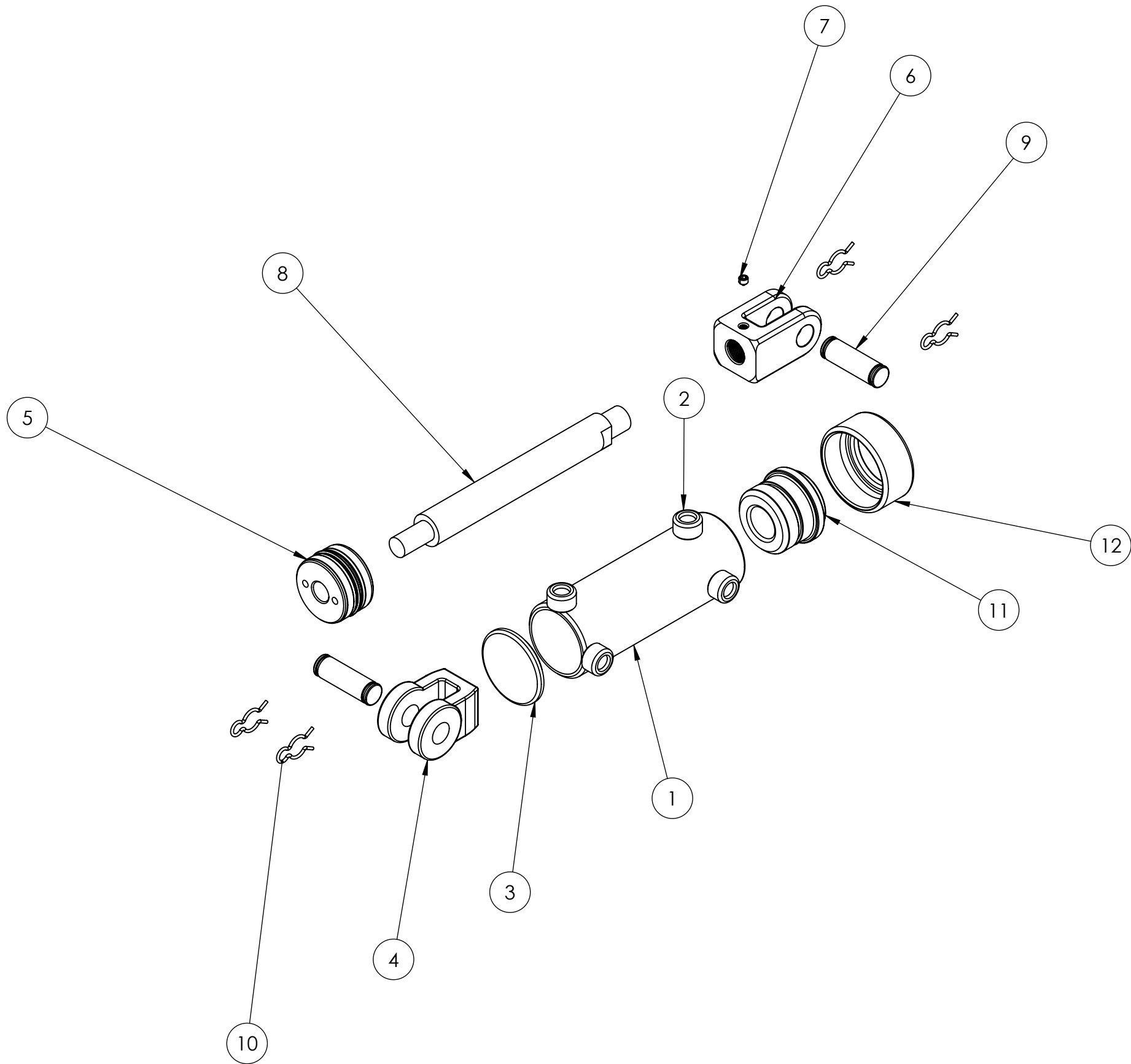
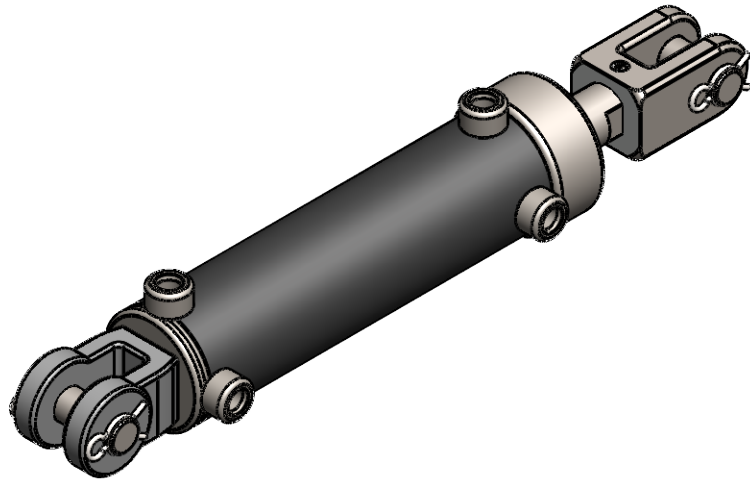
Drawing Approval (Customer)		
Name:	Signature:	Date:

Stroke :	203	±3 mm
Closed Centres :	514	±3 mm
Open Centres :	717	±3 mm

Special Instructions:
Fit metal plugs in ports
Include pins (x2) and clips (x4)

BUILD NUMBER:	
Sales Order Number:	
Invoice Number:	
Customer Order Number:	
Order Date:	
Date of Dispatch:	
Quantity:	
Multiple order:	of:

ITEM NO.	PART NUMBER	DESCRIPTION	QTY.
1	BR3.0	3974- BARREL	1
2	6006854-1	3/4 -8 UNO Port	4
3	6006538	BF300 Flat Base	1
4	6006287	CL-10 Clevis	1
5	6006223-1	WR300100P Piston	1
6	6007510	CL1.0-28-75 Threaded Clevis-1-1/8" UNF	1
7	9009427	3/8 UNF Grub Screw	1
8	SP1.5	3974- SHAFT	1
9	6007086	1.0x80 ZP pin	2
10	6006720	Clip to suit 1" Pin	4
11	6006189	3.0 x 1.5 Ultra Head	1
12	6006190	3.0 Ultra Cap	1



Note:

- All imperial threads are machined to 2A, 2B specification
- All metric threads are machined to 6g, 6H specification
- All pin holes machined to D9 tolerance unless specified otherwise
- All machine surface finishes are 3.2µm Ra
- Close/Open centres to ±3mm tolerance

1	Initial release	09-01-2024	TQ	-
REV.	DESCRIPTION	DATE	DRAWN	APPROVED
REVISIONS				